

# Standard Earth Bars

2023

Edition V4

Design & Manufacturers of:

| AC Switchgear | DC Switchgear | Bespoke Control Panels | AC & DC PDC's & PDU's |  
| Copper Junction Boxes | Marshalling Panels | Transition Boxes | Earth Bars |

## Page

2	Introduction
3-4	Standard Earth Bar Range - 4 to 54 ways
5-6	Single Isolation Link Earth Bar Range - 4 to 54 ways
7-8	Double Isolation Link Earth Bar Range - 4 to 54 ways
9-10	Isolation Link - Retro fit
11-12	Earth Bar Jointing Link - Retro Fit

All ratings based on an operating temperature of 40°C ambient temperature, with 50°C temperature rise

Head Office:  
34 Forest Road  
Hinckley  
Leicestershire  
LE10 1HB  
Tel: 01455 234996  
Email: [info@amjelectricaldesigns.co.uk](mailto:info@amjelectricaldesigns.co.uk)  
Web: [www.amjelectricaldesigns.co.uk](http://www.amjelectricaldesigns.co.uk)

Workshop:  
Units 53 & 73 Sparkenhoe Business Centre  
Southfield Road  
Hinckley  
Leicestershire  
LE10 1UB  
Tel: 01455 616686  
Email: [info@amjelectricaldesigns.co.uk](mailto:info@amjelectricaldesigns.co.uk)

Our Standard Earth Bar Range comes in 3 styles:

- ◆ Standard Earth Bars with no links
- ◆ Standard Earth Bar with Single Isolation Link
- ◆ Standard Earth Bar with Double Isolation Links

Our Earth bars have a unique design which will allow you to extend any of our Earth Bars with our Jointing Bar which can also be retro fitted easily, on site after installation.

In addition our unique design allows retro fitting of an Isolation link, to any of our ranges if your Standard Bar need's to be upgraded to a Single or Double Isolation Earth Bar in the future, to save installing a whole new Earth Bar.

All Earth Bars are supplied with M10 x 40 Brass Studs tapped into the copper, complete with M10 Brass Washers and Nuts on 40mm Stud Centres to allow upto a 240mm Cable to be installed any where on our Bars, using a single spanner.

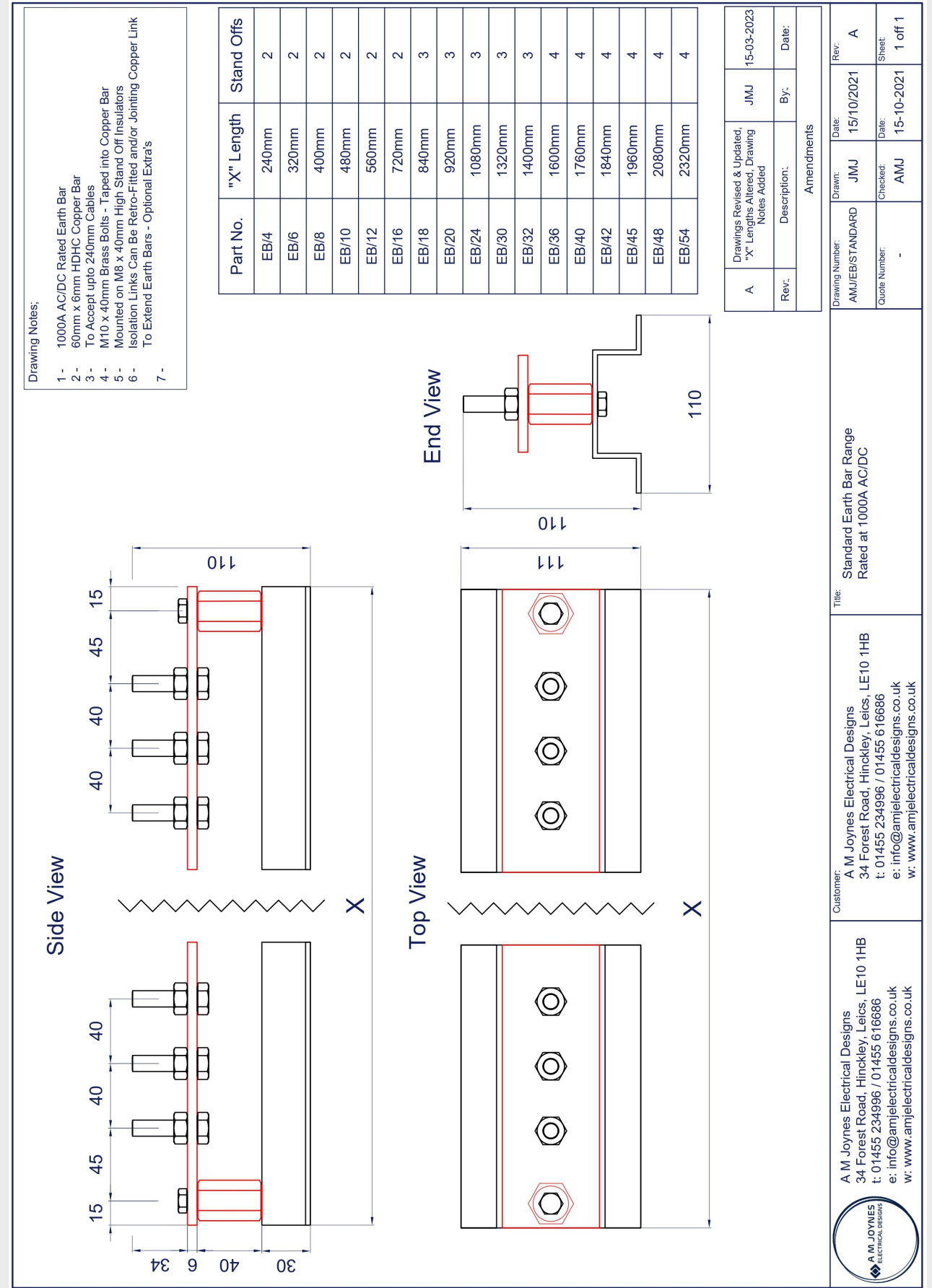
Our Earth Bars are mounted onto an Aluminium Top Hat Section with the Copper Bar being supported by M8 x 40mm Low Smoke Halogen Free Stand Off Insulators. Also, the Top Hat Section is Pre-Drilled with 5mm fixing holes for ease of installation on site.

Having a large copper holding, with all ancillary materials in stock, we can offer a bespoke service with quick turn arounds, if our Standard Range doesn't suit your needs. Just advise us of your current rating, max length, preferred stud centres, cable sizes and we can tailor to your needs.

# Standard Earth Bars

- ◆ Manufactured from 60 x 6mm HDHC C101 Radius Edge Copper Bar
- ◆ Rated at 1000amp AC / DC
- ◆ 40mm Stud Centres with M10 x 40mm Brass Studs as Standard
- ◆ Mounted on a "Top Hat" Aluminium Section with M8 x 40mm Halogen Free Hexagonal Stand Off Insulators
- ◆ Aluminium Section pre-drilled with 5mm holes for fixing
- ◆ Maximum Cable size is 240mm

Part Number	Description	Length	Weight	Lead Time	Price (ex VAT & Delivery)
EB/4	4 Way Earth Bar	240mm	1.5 kg	2 Days	£67.78
EB/6	6 Way Earth Bar	320mm	1.8 kg	2 Days	£78.29
EB/8	8 Way Earth Bar	400mm	2.3 kg	2 Days	£88.79
EB/10	10 Way Earth Bar	480mm	3 kg	2 Days	£99.29
EB/12	12 Way Earth Bar	560mm	3.3 kg	2 Days	£109.80
EB/16	16 Way Earth Bar	720mm	4.8 kg	2 Days	£130.80
EB/18	18 Way Earth Bar	840mm	5.0 kg	2 Days	£158.45
EB/20	20 Way Earth Bar	920mm	5.2 kg	2 Days	£168.95
EB/24	24 Way Earth Bar	1080mm	6.7 kg	2 Days	£189.96
EB/30	30 Way Earth Bar	1320mm	8.3 kg	2 Days	£221.47
EB/32	32 Way Earth Bar	1400mm	9.5 kg	2 Days	£231.97
EB/36	36 Way Earth Bar	1600mm	10 kg	2 Days	£284.63
EB/40	40 Way Earth Bar	1760mm	11 kg	2 Days	£305.64
EB/42	42 Way Earth Bar	1840mm	11.5 kg	2 Days	£316.14
EB/45	45 Way Earth Bar	1960mm	12 kg	2 Days	£331.90
EB/48	48 Way Earth Bar	2080mm	12.5 kg	2 Days	£347.65
EB/54	54 Way Earth Bar	2320mm	13.5 kg	2 Days	£379.16



# Single Isolation Link Earth Bars

- ◆ Manufactured from 60 x 6mm HDHC C101 Radius Edge Copper Bar
- ◆ Rated at 1000amp AC / DC
- ◆ 40mm Stud Centres with M10 x 40mm Brass Studs as Standard
- ◆ Mounted on a "Top Hat" Aluminium Section with M8 x 40mm Halogen Free Hexagonal Stand Off Insulators
- ◆ Aluminium Section pre-drilled with 5mm holes for fixing
- ◆ Maximum Cable size is 240mm

Part Number	Description	Length	Weight	Lead Time	Price (ex VAT & Delivery)
EB/4L1	Single Link 4 Way Earth Bar	410mm	2 kg	2 Days	£113.77
EB/6L1	Single Link 6 Way Earth Bar	490mm	2.3 kg	2 Days	£124.27
EB/8L1	Single Link 8 Way Earth Bar	570mm	2.8 kg	2 Days	£134.78
EB/10L1	Single Link 10 Way Earth Bar	650mm	3.5 kg	2 Days	£145.28
EB/12L1	Single Link 12 Way Earth Bar	730mm	3.8 kg	2 Days	£155.78
EB/16L1	Single Link 16 Way Earth Bar	890mm	5.3 kg	2 Days	£176.79
EB/18L1	Single Link 18 Way Earth Bar	1010mm	5.5kg	2 Days	£204.44
EB/20L1	Single Link 20 Way Earth Bar	1090mm	5.7 kg	2 Days	£214.94
EB/24L1	Single Link 24 Way Earth Bar	1250mm	7.2 kg	2 Days	£235.95
EB/30L1	Single Link 30 Way Earth Bar	1490mm	8.8 kg	2 Days	£267.46
EB/32L1	Single Link 32 Way Earth Bar	1570mm	10 kg	2 Days	£277.96
EB/36L1	Single Link 36 Way Earth Bar	1770mm	10.5 kg	2 Days	£330.62
EB/40L1	Single Link 40 Way Earth Bar	1930mm	12 kg	2 Days	£351.63
EB/42L1	Single Link 42 Way Earth Bar	2010mm	12 kg	2 Days	£362.13
EB/45L1	Single Link 45 Way Earth Bar	2130mm	12.5 kg	2 Days	£377.89
EB/48L1	Single Link 48 Way Earth Bar	2250mm	13 kg	2 Days	£393.64
EB/54L1	Single Link 54 Way Earth Bar	2490mm	14 kg	2 Days	£425.15

**Drawing Notes:**

- 1000A AC/DC Rated Earth Bar with Single Isolation Link
- Accept upto 1 off 300mm Incoming Cable
- M10 x 40mm Brass Bolt For Incoming Cable Taped into Copper Bar
- 60mm x 6mm HDHC Copper Bar
- To Accept upto 240mm Outgoing Cables
- M10 x 40mm Brass Bolts For Outgoing Cables Taped into Copper Bar
- Mounted on M8 x 40mm High Stand Off Insulators
- Isolation Links Can Be Retro-Fitted and/or Joining Copper Link To Extend Earth Bars - Optional Extra's

Part No.	"X" Length	Stand Offs
EB/4L1	410mm	4
EB/6L1	490mm	4
EB/8L1	570mm	4
EB/10L1	650mm	4
EB/12L1	730mm	4
EB/16L1	890mm	4
EB/18L1	1010mm	5
EB/20L1	1090mm	5
EB/24L1	1250mm	5
EB/30L1	1490mm	5
EB/32L1	1570mm	5
EB/36L1	1770mm	6
EB/40L1	1930mm	6
EB/42L1	2010mm	6
EB/45L1	2130mm	6
EB/48L1	2250mm	6
EB/54L1	2490mm	6

**End View**

**Side View**

**Top View**

Rev.	Description:	By:	Date:
A	Drawings Revised & Updated, "X" Lengths Altered, Drawing Notes Added	JMJ	15-03-2023

**Amendments**

Rev.	Date:	Drawn:	Rev:
A	15/10/2021	JMJ	A

**Customer:** A M Joynes Electrical Designs  
34 Forest Road, Hinckley, Leics, LE10 1HB  
t: 01455 234996 / 01455 616686  
e: info@amjelectricaldesigns.co.uk  
w: www.amjelectricaldesigns.co.uk

**Title:** Single Isolation Link Earth Bar Range  
Rated at 1000A AC/DC

**Quote Number:** -  
**Checked:** AMJ  
**Date:** 15-10-2021  
**Sheet:** 1 off 1

# Twin Isolation Link Earth Bars

- ◆ Manufactured from 60 x 6mm HDHC C101 Radius Edge Copper Bar
- ◆ Rated at 1000amp AC / DC
- ◆ 40mm Stud Centres with M10 x 40mm Brass Studs as Standard
- ◆ Mounted on a "Top Hat" Aluminium Section with M8 x 40mm Halogen Free Hexagonal Stand Off Insulators
- ◆ Aluminium Section pre-drilled with 5mm holes for fixing
- ◆ Maximum Cable size is 240mm

Part Number	Description	Length	Weight	Lead Time	Price (ex VAT & Delivery)
EB/4L2	Twin Link 4 Way Earth Bar	580mm	2.5 kg	2 Days	£159.76
EB/6L2	Twin Link 6 Way Earth Bar	660mm	2.8 kg	2 Days	£170.26
EB/8L2	Twin Link 8 Way Earth Bar	740mm	3.3 kg	2 Days	£180.77
EB/10L2	Twin Link 10 Way Earth Bar	820mm	4 kg	2 Days	£191.27
EB/12L2	Twin Link 12 Way Earth Bar	900mm	4.3 kg	2 Days	£201.77
EB/16L2	Twin Link 16 Way Earth Bar	1060mm	5.8 kg	2 Days	£222.78
EB/18L2	Twin Link 18 Way Earth Bar	1180mm	6.0 kg	2 Days	£250.43
EB/20L2	Twin Link 20 Way Earth Bar	1260mm	6.2 kg	2 Days	£260.93
EB/24L2	Twin Link 24 Way Earth Bar	1420mm	7.7 kg	2 Days	£281.93
EB/30L2	Twin Link 30 Way Earth Bar	1660mm	9.3 kg	2 Days	£313.44
EB/32L2	Twin Link 32 Way Earth Bar	1740mm	10.5 kg	2 Days	£323.95
EB/36L2	Twin Link 36 Way Earth Bar	1940mm	11 kg	2 Days	£376.61
EB/40L2	Twin Link 40 Way Earth Bar	2100mm	12.5 kg	2 Days	£397.62
EB/42L2	Twin Link 42 Way Earth Bar	2180mm	12.5 kg	2 Days	£408.12
EB/45L2	Twin Link 45 Way Earth Bar	2300mm	13 kg	2 Days	£423.87
EB/48L2	Twin Link 48 Way Earth Bar	2420mm	13.5 kg	2 Days	£439.63
EB/54L2	Twin Link 54 Way Earth Bar	2660mm	14.5 kg	2 Days	£471.14

**Drawing Notes:**

- 1000A AC/DC Rated Earth Bar with Twin Isolation Link
- Accept upto 1 off 300mm Incoming Cable Per Incoming Links
- M10 x 40mm Brass Bolt For Incoming Cable Taped into Copper Bar
- 60mm x 6mm HDHC Copper Bar
- To Accept upto 240mm Outgoing Cables
- M10 x 40mm Brass Bolts For Outgoing Cables Taped into Copper Bar
- M10 x 40mm High Stand Off Insulators Mounted on M8 x 40mm High Stand Off Insulators Isolation Links Can Be Retro-Fitted and/or Joining Copper Link
- To Extend Earth Bars - Optional Extra's

Part No.	"X" Length	Stand Offs
EB/4L2	580mm	6
EB/6L2	660mm	6
EB/8L2	740mm	6
EB/10L2	820mm	6
EB/12L2	900mm	6
EB/16L2	1060mm	6
EB/18L2	1180mm	7
EB/20L2	1260mm	7
EB/24L2	1420mm	7
EB/30L2	1660mm	7
EB/32L2	1740mm	7
EB/36L2	1940mm	8
EB/40L2	2100mm	8
EB/42L2	2180mm	8
EB/45L2	2300mm	8
EB/48L2	2420mm	8
EB/54L2	2660mm	8

The technical drawings show three views of the earth bar: Side View, Top View, and End View. The Side View shows the bar with its 60mm x 6mm profile and the 40mm stud centers. The Top View shows the bar with its 110mm width and the 40mm stud centers. The End View shows the bar with its 110mm width and the 40mm stud centers. The drawings are labeled with dimensions and part numbers.

Rev.	Description	By:	Date:
A	Drawings Revised & Updated, "X" Lengths Altered, Drawing Notes Added	JMJ	15-03-2023

Rev.	Description	By:	Date:
A	Drawings Revised & Updated, "X" Lengths Altered, Drawing Notes Added	JMJ	15-10-2021

Customer: A M Joynes Electrical Designs  
34 Forest Road, Hinckley, Leics, LE10 1HB  
t: 01455 234996 / 01455 616686  
e: info@amjelectricaldesigns.co.uk  
w: www.amjelectricaldesigns.co.uk

Title: Twin Isolation Link Earth Bar Range  
Rated at 1000A AC/DC

Drawing Number: AMJ/EB/ISO2  
Quote Number: -

Rev: A  
Date: 15/10/2021  
Sheet: 1 off 1

# Isolation Link - Retro Fit

- ◆ Copper Isolation Link to be retro-fitted onto any of our range of Earth Bars
- ◆ Can be installed to either end of existing Earth Bar
- ◆ Can also be Fitted to an existing Isolation Linked Earth Bar
- ◆ Manufactured from 60 x 6mm HDHC C101 Radius Edge Copper Bar
- ◆ Rated at 1000amp AC / DC
- ◆ Mounted on a “Top Hat” Aluminium Section with M8 x 40mm Halogen Free Hexagonal Stand Off Insulators
- ◆ Aluminium Section pre-drilled with 5mm holes for fixing
- ◆ Maximum Cable size is 300mm
- ◆ Overall Length 205mm - Additional Length to existing Earth Bar 170mm
- ◆ Simply push the new Isolation Link up to existing earth bar, and replace M8x20 bolt in the original stand off insulator on the earth bar with a new M8x25 bolt’s supplied with new Isolation Link fitting kit & then securely fit new Isolation Link Aluminium top hat rail to the floor/wall via the fixing holes

Part Number	Description	Length	Weight	Lead Time	Price (ex VAT & Delivery)
EB/ISOL	Earth Bar Isolation Link - Retrofit	205mm	1 kg	2 Days	£57.91



Technical drawing showing front, side, and detail views of the Earth Bar Isolation Link - Retrofit. Dimensions are provided in millimeters.

**Front View (Top):** Overall length 205mm, width 60mm. Three M8x25 bolts are shown. Spacing between bolts: 55mm, 55mm, 15mm. Hole spacing: 30mm, 30mm, 30mm.

**Side View (Top):** Overall length 170mm, height 15mm.

**Front View (Bottom):** Overall length 170mm, width 111mm. Three M8x20 bolts are shown. Spacing between bolts: 130mm, 20mm, 20mm. Hole spacing: 30mm, 30mm, 30mm.

**Side View (Bottom):** Overall length 170mm, height 110mm.

**Detail View (Bottom):** Shows the connection between the copper bar and the aluminium rail. Dimensions: 57mm, 15mm, 55mm, 55mm, 15mm, 30mm, 34mm, 6mm, 40mm, 40mm.

Drawings Revised & Updated, Dimensions Altered, Drawing Notes Added	JMJ	By:	Date:
A	Rev:	Description:	Amendments

Drawings Revised & Updated, Dimensions Altered, Drawing Notes Added	JMJ	By:	Date:
A	Rev:	Description:	Amendments

Customer: A M Joynes Electrical Designs  
34 Forest Road, Hinckley, Leics, LE10 1HB  
t: 01455 234996 / 01455 616686  
e: info@amjelectricaldesigns.co.uk  
w: www.amjelectricaldesigns.co.uk

Title: Isolation Link - Retrofit  
Rated 1000A AC/DC

Drawing Number: AMJ/EB/ISOL  
Quote Number: -

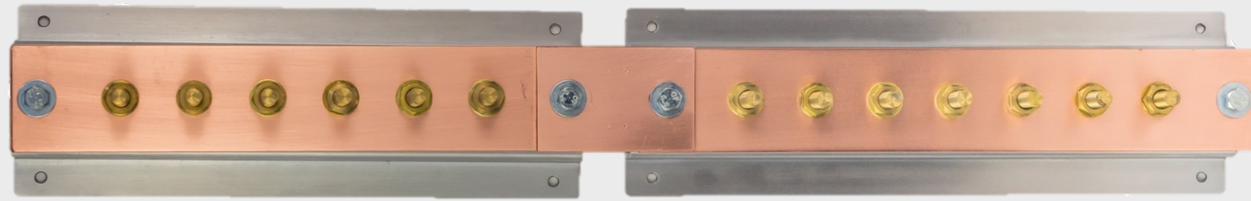
Drawn: MJM  
Checked: AMJ  
Date: 14/10/2021  
Date: 14/10/2021  
Rev: A  
Sheet: 1 of 1

Drawing Notes:

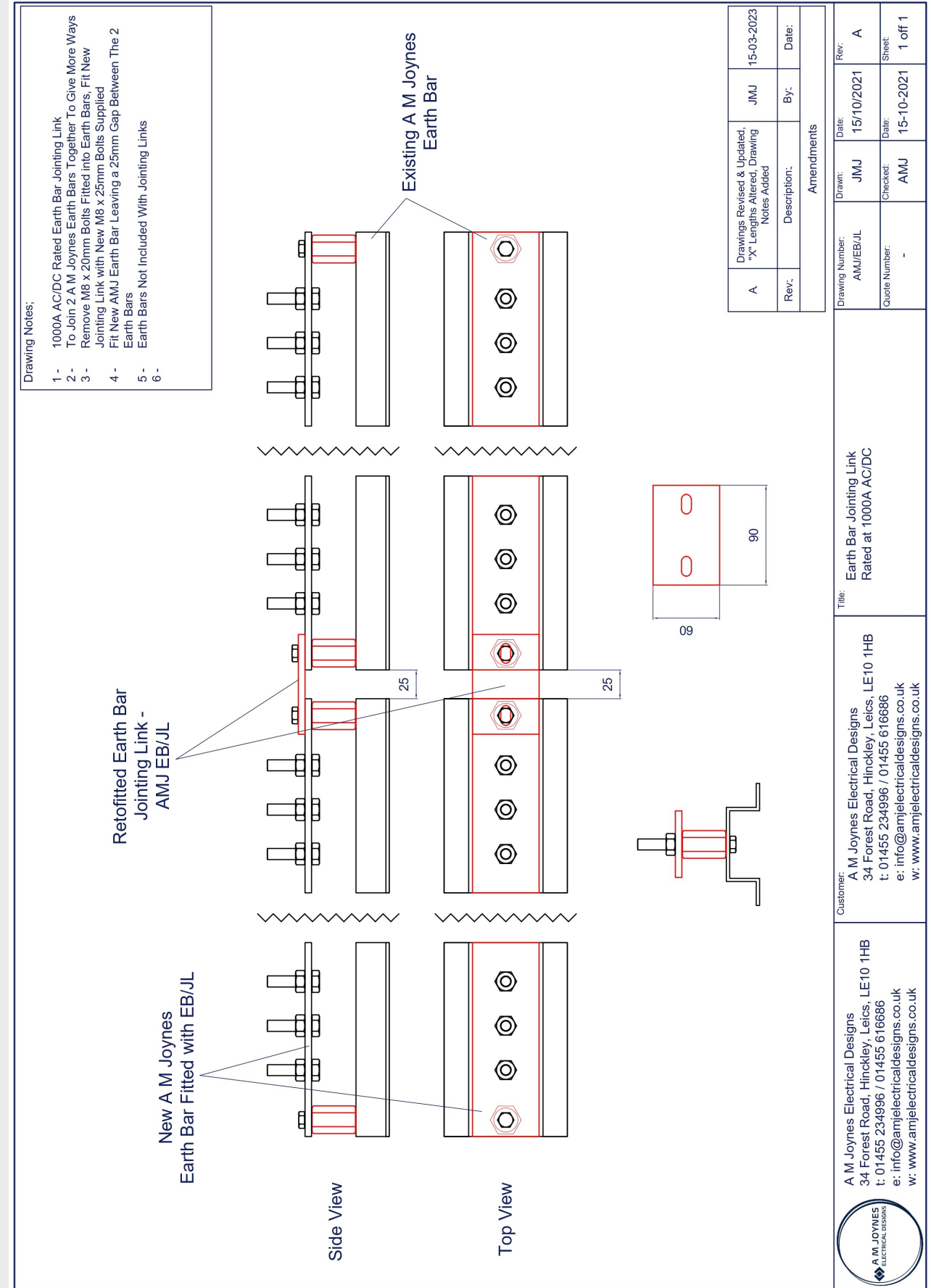
- 1 -
- 2 -
- 3 -
- 4 -
- 5 -
- 6 -

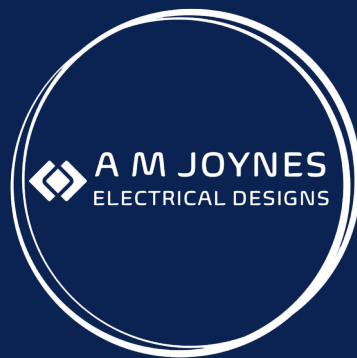
# Earth Bar Jointing Link - Retro Fit

- ◆ Copper Jointing Link to be retro-fitted onto any of our range of Earth Bars to extend and join 2 Earth Bars together
- ◆ Can be installed to either end of existing Earth Bar
- ◆ Can also be Fitted to an existing Isolation Linked Earth Bar
- ◆ Manufactured from 60 x 6mm HDHC C101 Radius Edge Copper Bar
- ◆ Rated at 1000amp AC / DC
- ◆ Overall Length 90mm - Gap between Earth Bars 25mm
- ◆ Ran out of ways on an existing earth bar? Simply purchase another A M Joynes Earth Bar and this Jointing Link to extending your existing Earth Bar. Installation couldn't be easier as well, just remove the M8x20 bolts fitting into the existing Stand off insulators on the existing Earth Bar & the New Earth Bar then fit the new M8x25 Bolts Supplied with the Jointing Link, and the finally secure the new Earth



Part Number	Description	Length	Weight	Lead Time	Price (ex VAT & Delivery)
EB/JL	Earth Bar Jointing Link	90mm	0.1 kg	2 Days	£19.76





Head Office:

34 Forest Road

Hinckley

Leicestershire

LE10 1HB

Tel: 01455 234996

Email: [info@amjelectricaldesigns.co.uk](mailto:info@amjelectricaldesigns.co.uk)

Web: [www.amjelectricaldesigns.co.uk](http://www.amjelectricaldesigns.co.uk)

Workshop:

Units 53 & 73 Sparkenhoe Business Centre

Southfield Road

Hinckley

Leicestershire

LE10 1UB

Tel: 01455 616686

Email: [info@amjelectricaldesigns.co.uk](mailto:info@amjelectricaldesigns.co.uk)